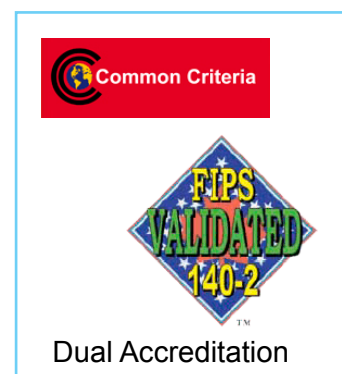


CN1000 SONET/SDH Encryptor

Senetas CN1000 SONET/SDH encryptors are high performance encryption platforms that provide maximum security within modern telecommunications networks. The system can be configured at speeds of 155Mbps (OC-3) to 2488.32Mbps (OC-48), and supports both Line and Path mode topologies. The companion CN3000 SONET/SDH Encryptor provides support for 9953.28Mbps (OC-192) connections.

Key Features

- Full duplex line-rate encryption at up to 2488.32Mbps
- Certified to Common Criteria EAL4+ security level
- Certified to FIPS 140-2 level 3 security requirements
- Bump in the wire design for easy installation
- Supports Line and Path connections
- Independent multiplexed Path encryption
- Provides standards based certificates and key management
- Uses the secure AES 256 bit encryption algorithm
- Counter mode encryption with synchronisation
- Hands-off automated key management
- Standards based trust model using X.509 certificate authentication
- Centralised CypherManager configuration and management system
- Tamper resistant and tamper evident enclosure
- Network connections via pluggable SFP interfaces



Overview

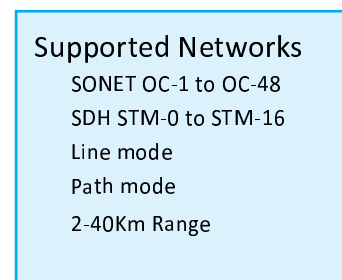
The CN1000 provides users with flexible encryption that addresses the needs of the largest enterprises that have a requirement to secure sensitive information traversing the network. The system can be used to secure both Path and Line connections.

The unit operates in full-duplex mode at full line speed without loss of frames.

Latency for an OC-48 link is 10 microseconds per unit.

Network and Management

CypherManager, Senetas' element manager can be used to configure and manage the CN1000 within the network. Management connections are via an RJ45 on the front panel, and in addition a Command Line Interface connection is available via a DB9 RS232 serial connector. The local (protected) and network (unprotected) connections are made via SFP optical interfaces.



Order codes:

CN1000-SONET-OC3	155.52 Mbps
CN1000-SONET-OC12	622.08 Mbps
CN1000-SONET-OC48	2.488 Gbps



Specifications

Cryptography

AES encryption algorithm
256 bit session and master keys
Counter mode encryption

Key Management

ATM Forum V1.1 specification
X.509 certificate authentication
RSA Public key Infrastructure
Periodic automatic key updates
Master and Session keys

Performance

Speed of 155 to 2488.32Mbps
Latency of 20 microseconds max

Management

CypherManager element manager
IPv4 and IPv6 support
Automatic encryptor discovery
SNMPv3 control, SNMPv1 monitoring
Out-of-band and Inband management
Alarm, Event, and Audit logs
SNMP traps and monitoring
RS232 local console (CLI)

Certification

FIPS 140-2 level 3
Common Criteria EAL4+

Front Panel

LED's for interface, security, temperature, alarms, power.
20 char LCD display
Keypad (0-9, and data entry/edit)
RJ45 and DB9 Management connectors

Rear Panel

SFP optical connector cages
(OC3/STM1 to OC48/STM64)
IEC13 Power socket

Installation

Size - 482mm (19"), 42mm (1U), 380mm (WxHxD)
Weight: - 6 Kg
0° to 40°C operating temperature
0 to 80% RH at 40°C operating

Shipping/Storage

Size - 560mm, 120mm, 430mm, (WxHxD)
Weight - 6.5Kg
Max temperature 40°C, 95% RH at 40°C

Physical Security

Tamper proof Key and user password storage
Tamper resistant/evident metal case
Anti probing barriers

Power Requirements

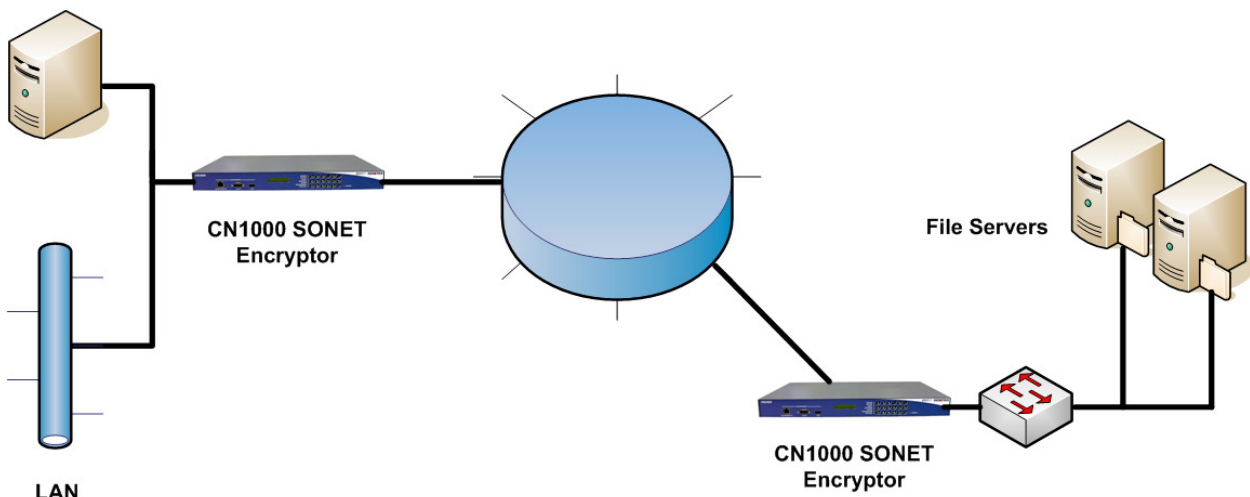
90-240 VAC / 47-63 Hertz
60 watts

Regulatory

Emissions - FCC Part 15 Class B
RoHS compliant
Other - CE and N3912



All specifications are accurate as of the time of printing and are subject to change to meet the ongoing requirements of Senetas and its customers.



SONET Ring Configuration