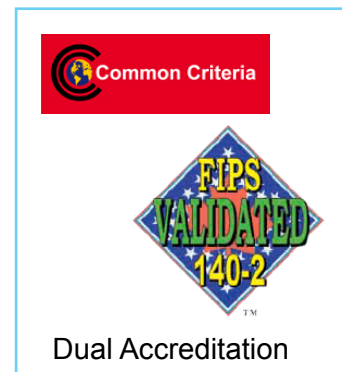


## CN1000 LINK Encryptor

**Senetas CN1000 LINK** encryptors are high performance encryption platforms that provide maximum security within T1/E1 networks or across protocol independent serial links. The system can be configured at speeds of 2.048Mbps and supports up to 32 encrypted or unencrypted channels.

### Key Features

- Full duplex line-rate encryption at up to 2Mbps
- Supports E1, T1 or X.21 interfaces
- Certified to Common Criteria EAL4+ security level
- Certified to FIPS 140-2 level 3 security requirements
- Bump in the wire design for easy installation
- Cut-through architecture for minimum latency
- Selective encryption of each timeslot/group of timeslots (E1/T1)
- Choice of AES or DES encryption algorithms
- CFB mode encryption with synchronisation
- Hands-off automated key management
- Standards based trust model using X.509 certificate authentication
- Centralised CypherManager configuration and management system
- Tamper resistant and tamper evident enclosure
- Network connections via selected pluggable interfaces



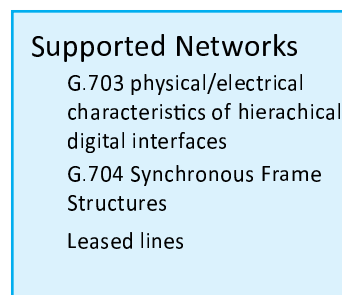
### Overview

The CN1000 provides users with flexible encryption that addresses the needs of the largest enterprises that have a requirement to secure sensitive information traversing the network.

The unit operates in full-duplex mode at full line speed without loss of packets.

### Network and Management

CypherManager, Senetas' element manager can be used to configure and manage the CN1000 within the network. Management connections are via an RJ45 on the front panel, and in addition a Command Line Interface connection is available via a DB9 RS232 serial connector. The local (protected) and network (unprotected) connections are made via RJ45 and BNC interfaces.



### Order codes:

CN1000-LINK                      SENETAS X.21/V.11 LINK Encryptor  
CN1000-LINK-E1                SENETAS 2.048 Mbps E1 LINK Encryptor



## Specifications

### Cryptography

AES or DES/3DES encryption algorithms  
256 bit session and master keys  
CFB mode self synchronising encryption

### Key Management

ATM Forum V1.1 specification  
X.509 certificate authentication  
RSA Public key Infrastructure  
Periodic automatic key updates  
Master and Session keys

### Performance

Data rates to 2.048Mbps  
Full duplex operation at all line speeds  
Audit trail and Alarm/Event logs

### Management

CypherManager element manager  
IPv4 and IPv6 management support  
Automatic encryptor discovery  
SNMPv3 control, SNMPv1 monitoring  
Out-of-band management  
Alarm, Event, and Audit logs  
SNMP traps and monitoring  
RS232 local console (CLI)

### Certification

FIPS 140-2 level 3  
Common Criteria EAL4+

### Front Panel

LED's for interface, security, temperature, alarms, power.  
20 char LCD display  
Keypad (0-9, and data entry/edit)  
RJ45 and DB9 Management connectors

### Rear Panel

V.11/X.21  
E1/T1 - RJ45  
IEC13 Power socket

### Installation

Size - 482mm (19"), 42mm (1U), 380mm (WxHxD)  
Weight: - 6 Kg  
0° to 40°C operating temperature  
0 to 80% RH at 40°C operating

### Shipping/Storage

Size - 560mm, 120mm, 430mm, (WxHxD)  
Weight - 6.5Kg  
Max temperature 40°C, 95% RH at 40°C

### Physical Security

Tamper proof Key and user password storage  
Tamper resistant/evident metal case  
Anti probing barriers

### Power Requirements

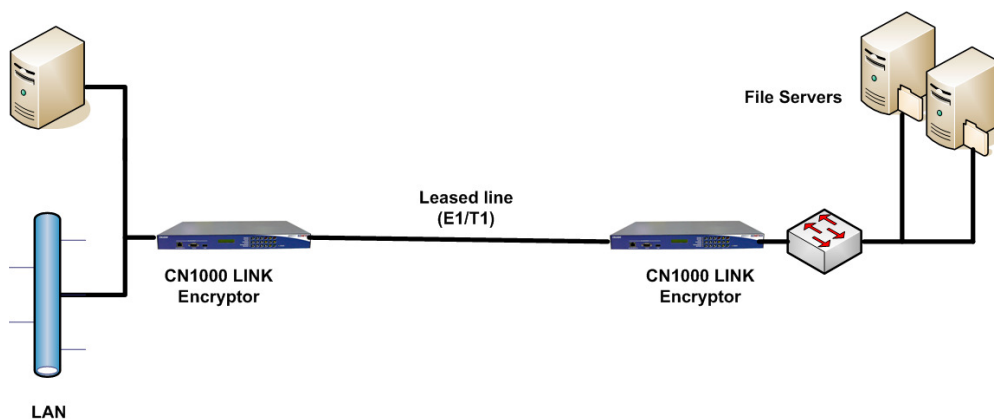
90-240 VAC / 47-63 Hertz  
25 watts

### Regulatory

Emissions - FCC Part 15 Class B  
RoHS compliant  
Other - CE and N3912



All specifications are accurate as of the time of printing and are subject to change to meet the ongoing requirements of Senetas and its customers.



Network example